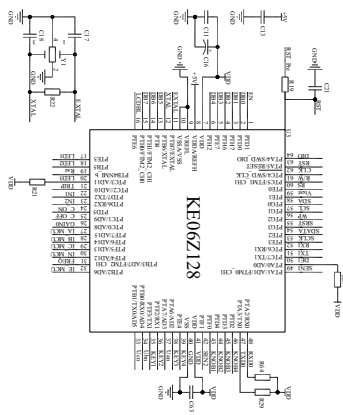
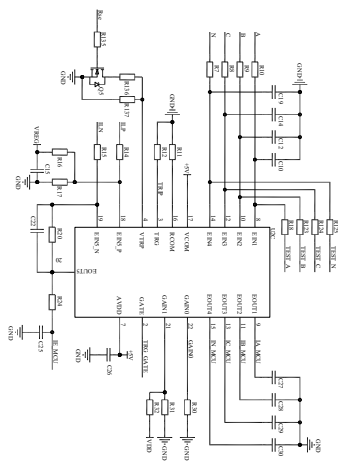


600 * 252.01.SI

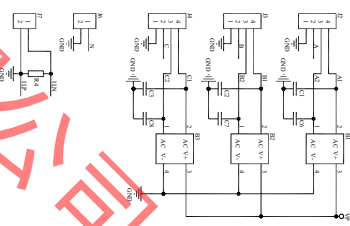
MCU电路



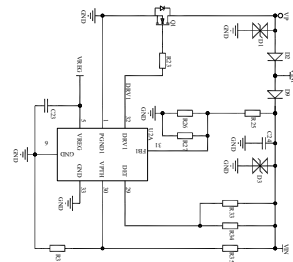
电流采样电路



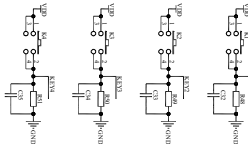
整流电路



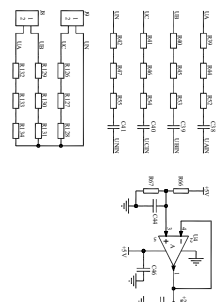
电流电源调节电路



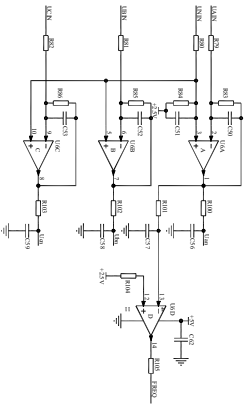
按键电路



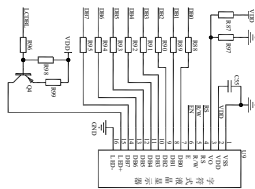
电压采样电路(0-690V)



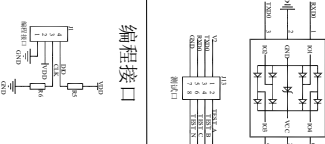
编码开关电路



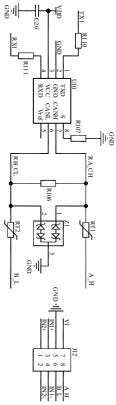
LCD显示电路



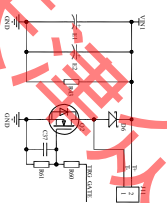
测试口电路



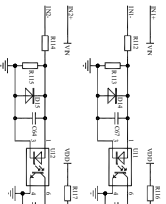
内部通信电路



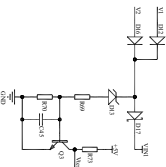
脱扣控制电路



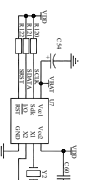
状态检测电路



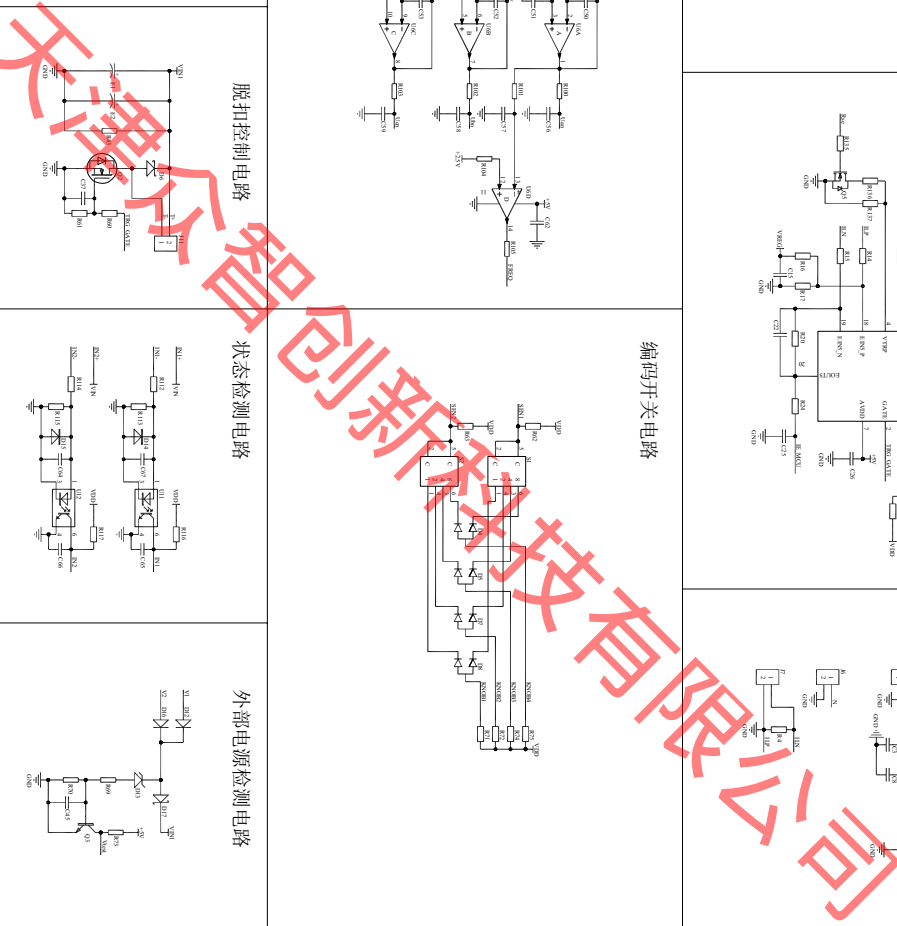
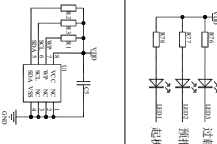
外部电源检测电路



时钟处理



指示电路



使用产品登记

插图

描校

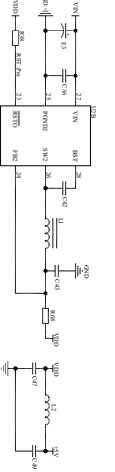
旧底图总号

底图总号

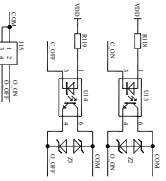
签字

日期

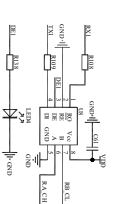
5V电源电路



输出控制电路



外部通信电路



FTU2-H/P控制器

天津众智创新科技有限公司

编码

FTU2控制器原理图

标记

处数

分区

更改文件号

签字

日期

设计

校对

审核

工艺

标准化

审定

批准

众智创新科技

阶段标记

S A B

重量

共 1 张

比例

第 1 张

FSI0.352.009

1

2

3

4

5

6

7

8